

PW56201



GB | Watering Timer



Contents

Safety Instructions and Warnings	2
Technical Specifications	3
Description	4
Getting Started	5
Mobile App	6
Controls and Functions	9
Troubleshooting FAQ	13

Safety Instructions and Warnings



Read the user manual before using the device.



Follow the safety instructions in the manual.

- Do not tamper with the internal electrical circuits of the product – doing so may damage the product and will automatically void the warranty. The product should only be repaired by a qualified professional.
- Clean the product using a soft, slightly damp cloth. Do not use solvents or detergents – they could scratch the plastic parts and cause corrosion of the electrical circuits.
- Do not use the device in the proximity of devices that generate electromagnetic fields.
- Do not expose the product to excessive force, impact, dust, high temperatures or humidity – these may cause the product to malfunction or may deform its plastic parts.
- Do not insert any objects into the openings on the device.
- Do not submerge the device in water.
- Protect the device from falls or impacts.
- Do not throw batteries into a fire and do not disassemble or short-circuit them.
- Keep the batteries out of reach of children. Ingestion may result in poisoning by chemicals, perforation of soft tissues and death.
- Severe poisoning may occur within two hours of first issues appearing. Seek medical attention immediately.
- Only use the device in accordance with the instructions provided in this manual.
- The manufacturer is not liable for damage caused by improper use of the device.
- The appliance is not intended for use by persons (including children) whose physical, sensory or mental disability, or lack of experience and expertise prevents safe use, unless they are supervised or instructed in the use of the appliance by a person responsible for their safety. Children must always be supervised to ensure they do not play with the appliance.

EMOS spol. s r.o. hereby declares that radio device type PW56201 is in accordance with directive 2014/53/EU. The full wording of the EU declaration of conformity is available at <http://www.emos.eu/download>.





Technical Specifications

Max. operating pressure: 0.5 to 8 bar
(7.25 to 116.03 psi)

Operating temperature 3 °C to 50 °C

Watertightness: IP 54

Watering frequency: unlimited

Watering time: 1 minute to 24 hours

Connection: 2.4 GHz Wifi/Bluetooth

Power supply 4× 1.5 V AA batteries
(not included)



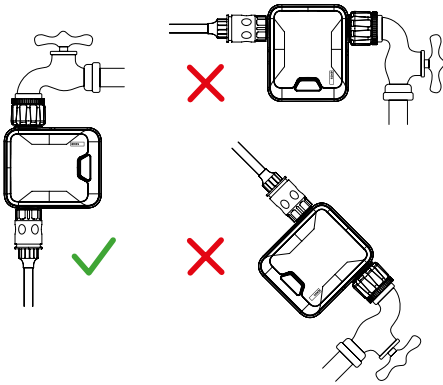


Description

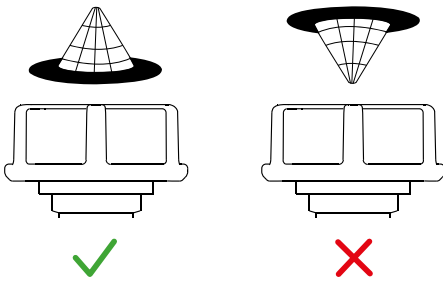
- 1 – outlet
- 2 – manual control button/led
- 3 – connection to 1" tap
- 4 – 3/4" adapter
- 5 – filter
- 6 – battery compartment



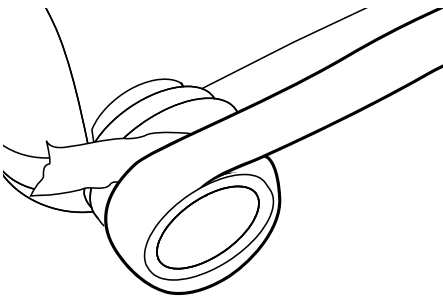
Getting Started



1. Slide out the battery compartment and insert 4× 1.5 V AA alkaline batteries; do not use 1.2 V rechargeable batteries, these may cause the device to not function.
2. Slide the battery compartment back in firmly to ensure watertightness.
3. Turn off water supply.
4. Screw the timer to a water tap in the correct vertical position in accordance with figure, or use a $\frac{3}{4}$ " adapter if needed.



5. Make sure the filter is in the correct position and is clean, see figure.
6. Connect a garden hose onto the timer's outlet.



7. If necessary, use Teflon tape to seal, see figure.
8. Then, open the water supply.

Note:

Remove the batteries if the timer will not be used for an extended period of time.

When programming the timer, the tap must be closed to prevent water from spraying out unexpectedly.

Do not mount the timer using tools. Tighten it by hand only.

Do not expose the timer to frost. The timer should be removed when sub-zero temperatures are imminent to protect it from damage.

To prolong the life of the timer, the filter must be clean and in place while the timer is in use.

Clean the filter with a stream of water regularly.

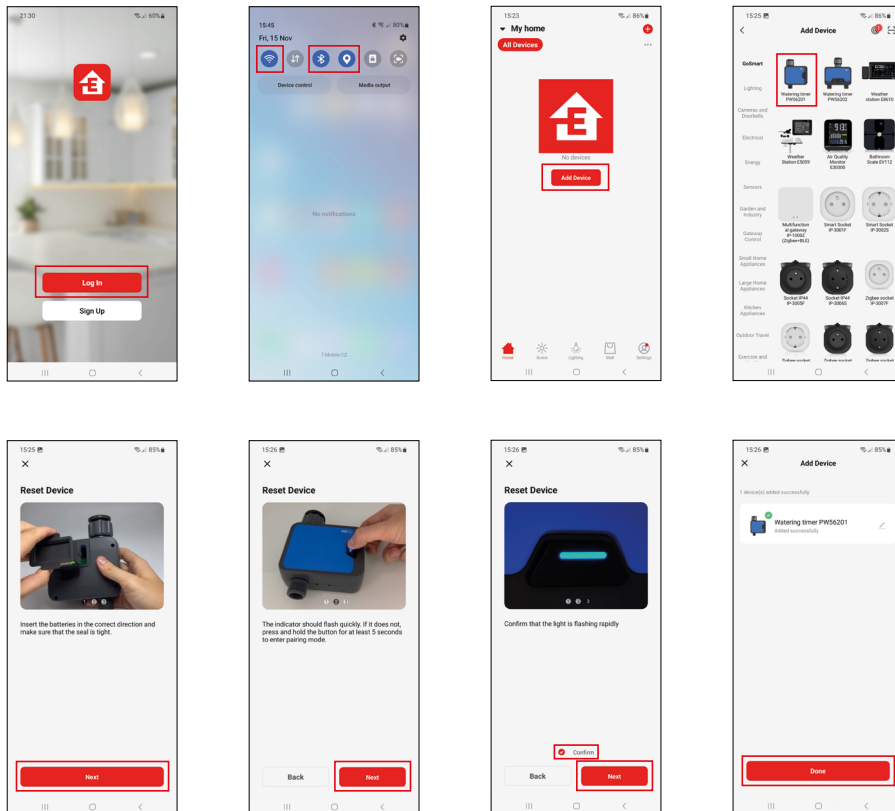


Mobile App



The timer can be controlled using a mobile app for iOS or Android. Download the EMOS GoSmart app for your device. Tap the Log In button if you've used the app before. Otherwise, tap the Sign Up button and register.

Pairing with the App



Insert 4× 1.5 V AA batteries into the timer; the LED will start flashing.

If the LED is not flashing, long-press the manual control button for approx. 5 seconds.

Tap Add Device in the app.

Tap the GoSmart list on the left and tap the Watering timer PW56201 icon.

Follow the instructions in the app and enter the name and password for your 2.4 GHz Wi-Fi network.

The pairing with the app will be completed within 2 minutes; the LED will stop flashing.

Note: If the device fails to pair, repeat the process. 5 GHz Wi-Fi networks are not supported.

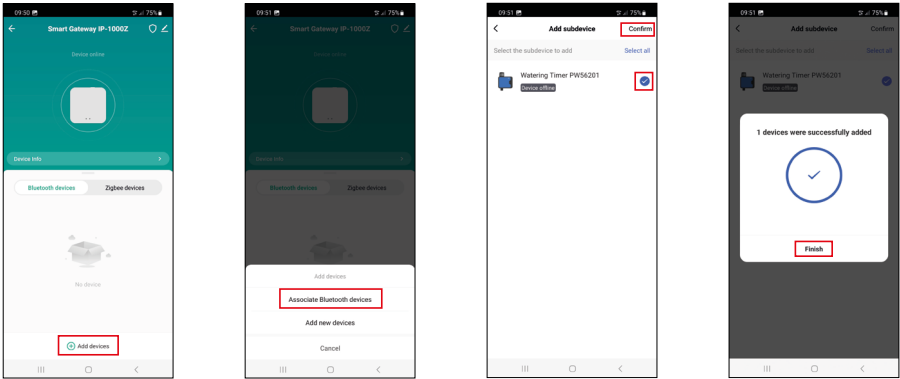
Warning:

To control the device through the app, the timer must be within reach of the phone's Bluetooth connection. The timer can only connect to 1 Bluetooth device at a time.

If you want to control the timer remotely, it must be associated with a Bluetooth gateway, e.g. H5001 (not included).

Advanced settings allow sharing control of the device to another person.

Association with a Bluetooth Gateway



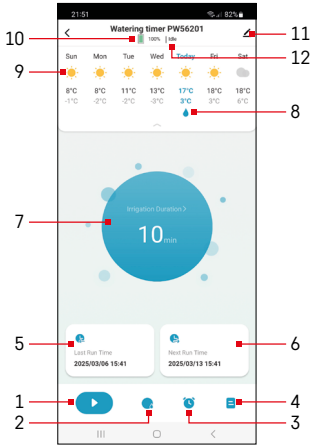
Pair the Bluetooth gateway in the app.
Open the Bluetooth menu of the gateway and tap add device and associate Bluetooth devices.
Choose a Bluetooth device and confirm association.



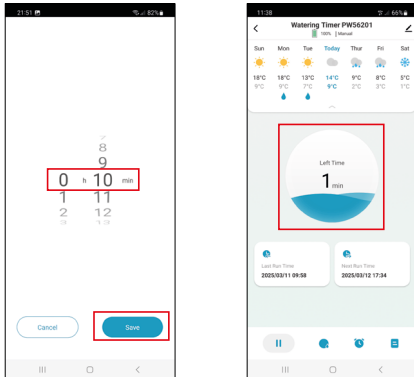
Controls and Functions


App Menu

- 1 – manual control
- 2 – delayed irrigation
- 3 – irrigation programming
- 4 – irrigation history
- 5 – time of last irrigation
- 6 – time of next irrigation
- 7 – manual irrigation time setting
- 8 – completed/programmed irrigation
- 9 – weather forecast
- 10 – battery level
- 11 – advanced settings
- 12 – timer operating mode (Auto/Manual/Off)



Manual Control



You can activate/deactivate manual irrigation mode by pressing the  button in the app or using the buttons on the timer.

Click the icon for manual irrigation time setting and set the desired time (max. 24 hours, 1 minute resolution). Upon activation, the icon will display the remaining irrigation duration.

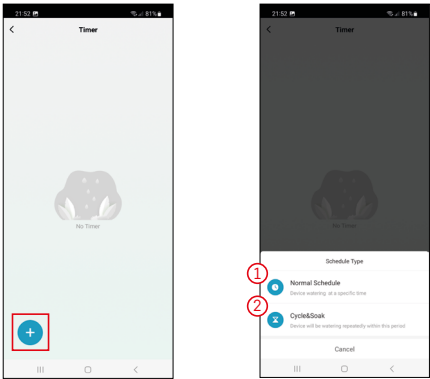
Note: Every opening/closing of the valve is accompanied by a click.


Active irrigation is indicated on the timer button by a blue LED flashing 1x every 3 seconds.

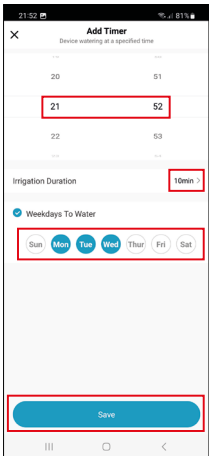
Delayed Irrigation

Programmed irrigation can be manually delayed by 24h/48h/72h to match the weather forecast.

Irrigation Programming

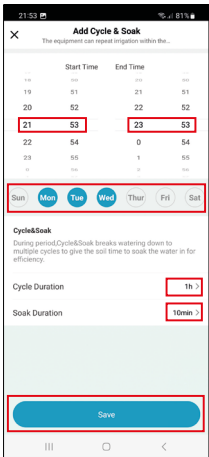


Tap the  icon and choose a programme setting:



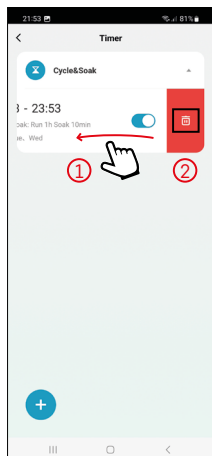
Normal Programme

Irrigation for a set period of time during the day.
Se the start time - duration - and days when irrigation should be active.
Save using the button at the bottom.



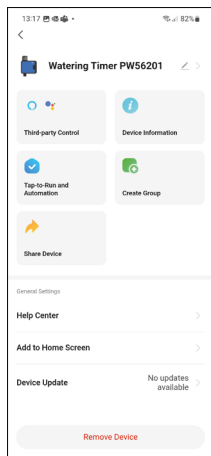
Cyclical Programme

A cyclical programme enables setting irrigation to repeat for a certain period during the day.
For instance, you can set the timer to activate irrigation for one minute every 10 minutes from 20:00 to 22:00.
The programme can be helpful to water plants with high water demands on hot days.
The mode helps soak the soil.
Set the start and end time of the cycle – irrigation days – cycle duration – cycle repeat.
Save using the button at the bottom.



To delete, slide the selected programme to the left and confirm deletion.

Warning: You can set an unlimited number of programmes and their combinations. However, programmed irrigation schedules must not overlap.



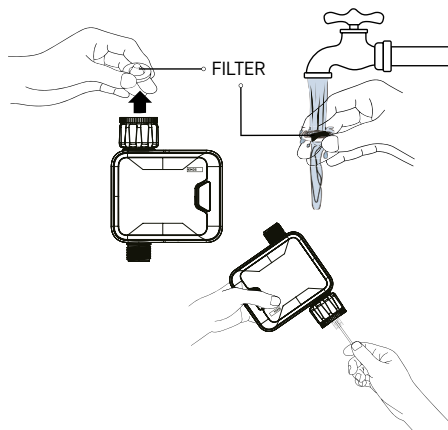
Advanced Settings

- Third party control – support for Alexa/Google Assistant services
- Device information – basic information about the device
- Tap-To-Run and Automation – scenes and automations assigned to the device
- Create Group – creates a group of similar devices
- Share Device – shares control of the device with another person
- Help Center – displays frequently asked questions and their solutions and provides the option to send us a question/suggestion/feedback directly
- Add to Home Screen – adds an icon for the device on the phone's home screen
- Device Update – updates the device
- Remove Device – unpairs the device

Low Battery Indication Function

When battery voltage drops below 4.5 V, currently active irrigation will be stopped and the valve will close. Programming will not be available.

Low batteries are indicated by a red LED flashing 1× every 3 seconds and by a low battery icon in the app. Change the batteries in the timer.



Timer Maintenance

Perform regular inspection of the timer as per figure.

Dirt may accumulate inside the timer during use.

1. Turn off the water supply and unscrew the timer.
2. Remove and check the filter.
3. If it is dirty, wash it under a stream of water.
4. Press the manual activation button to open the valve.
5. Check the timer's inlet and outlet and clean them with a small brush if needed.



Troubleshooting FAQ

Control via the app not working

- The timer is outside of direct range of the phone's Bluetooth connection – shorten the distance between the devices.
- For remote control, the timer must be paired with a Bluetooth gateway, see information about association with a Bluetooth gateway.
- The timer's valve does not open/close
- The timer has not been used for an extended period of time.
- The valve is blocked.
- Close the water supply. Press the manual control button several times.
- File a complaint about the timer.

Short battery life

- Change the batteries.
- Use 1.5 V alkaline batteries only. Do not use 1.2 V rechargeable batteries.
- Use batteries of the same type, do not combine old and new batteries.

The timer does not irrigate

- No irrigation programme has been set.
- The water supply is closed – open the water supply.
- Low batteries – change the batteries.

Low water pressure

- Clogged filter – clean the filter or replace with a new one.
- Insufficient input pressure – check that the timer is installed correctly.
- connect a booster pump or another device to increase the water pressure.



